

Ground Floor Apartment 2, George House High Street Blagdon BS40 7TQ |










£850 Per Calendar Month  
including some bills

marktempler

RESIDENTIAL LETTINGS





 <b>PROPERTY TYPE</b> Ground Floor Flat or Basement Flat /	 <b>LOCATION</b> Blagdon
 <b>BEDROOMS</b> 1	 <b>RECEPTION ROOMS</b> 1
 <b>BATHROOMS</b> 1	 <b>WARMTH</b> Gas central heating
 <b>PARKING</b> Off street parking space	 <b>OUTSIDE SPACE</b> No outside space
 <b>EPC RATING</b> D	 <b>COUNCIL TAX BAND</b> A

- Part furnished double size bedroom accommodation
- Unique one bedroom flat
- Security Deposit - £980.77
- Holding Deposit - £196.15
- Tenancy Term - 6 months
- EPC Rating - D
- Council Tax Rating - A

## What will it cost to rent this property?

When you submit a completed application form, we will discuss the details with the Landlord. If the Landlord is happy to proceed you will be required to pay:

1. Holding deposit, equivalent to 1 week's rent. This will reserve the property.

Once references are complete, you will be asked to pay:

2. First month's rent
3. Security deposit, equivalent to 5 weeks' rent (for rents under £50,000 per year). This covers damages or defaults on the part of the tenant during the tenancy.



Fitted kitchen with cooker, and use of appliances

Large lounge/dining room with feature log burning fire

Bathroom with shower over the bath

Sought after village location with cosy local public houses

## Available From

This property is available to move into from approx 24th March 2025



## Utilities

Mains water and drainage, mains electric supply, gas central heating. This information has been provided by the Landlord and is correct to the best of our knowledge.

## Broadband

Ultrafast broadband available with highest available download speed 1139 Mbps and highest available upload speed 1000 Mbps. This information is sourced via checker.ofcom.org.uk, we advise you make your own enquires.

## Mobile phone coverage/signal

There is limited to likely coverage indoors depending on the provider and likely coverage outdoors with a range of providers. This information is sourced via checker.ofcom.org.uk, we advise you make your own enquires.

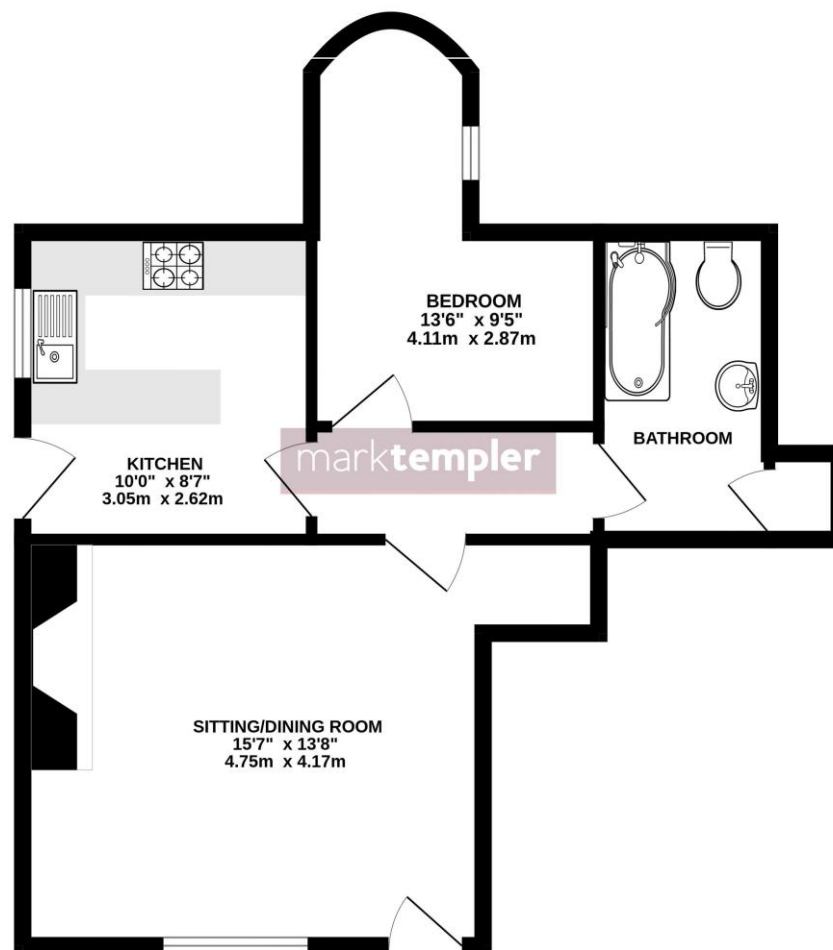


For the latest properties and local news follow Mark Templer Residential Lettings on:





GROUND FLOOR  
516 sq.ft. (48.0 sq.m.) approx.



TOTAL FLOOR AREA : 516 sq.ft. (48.0 sq.m.) approx.

Whilst every attempt has been made to ensure the accuracy of the floorplan contained here, measurements of doors, windows, rooms and any other items are approximate and no responsibility is taken for any error, omission or mis-statement. This plan is for illustrative purposes only and should be used as such by any prospective purchaser. The services, systems and appliances shown have not been tested and no guarantee as to their operability or efficiency can be given.  
Made with Metropix ©2024